



NORWEGIAN COOPERATION PROGRAMME WITH ROMANIA
as per May 2009



PROGRAMME STATISTICS

FINAL



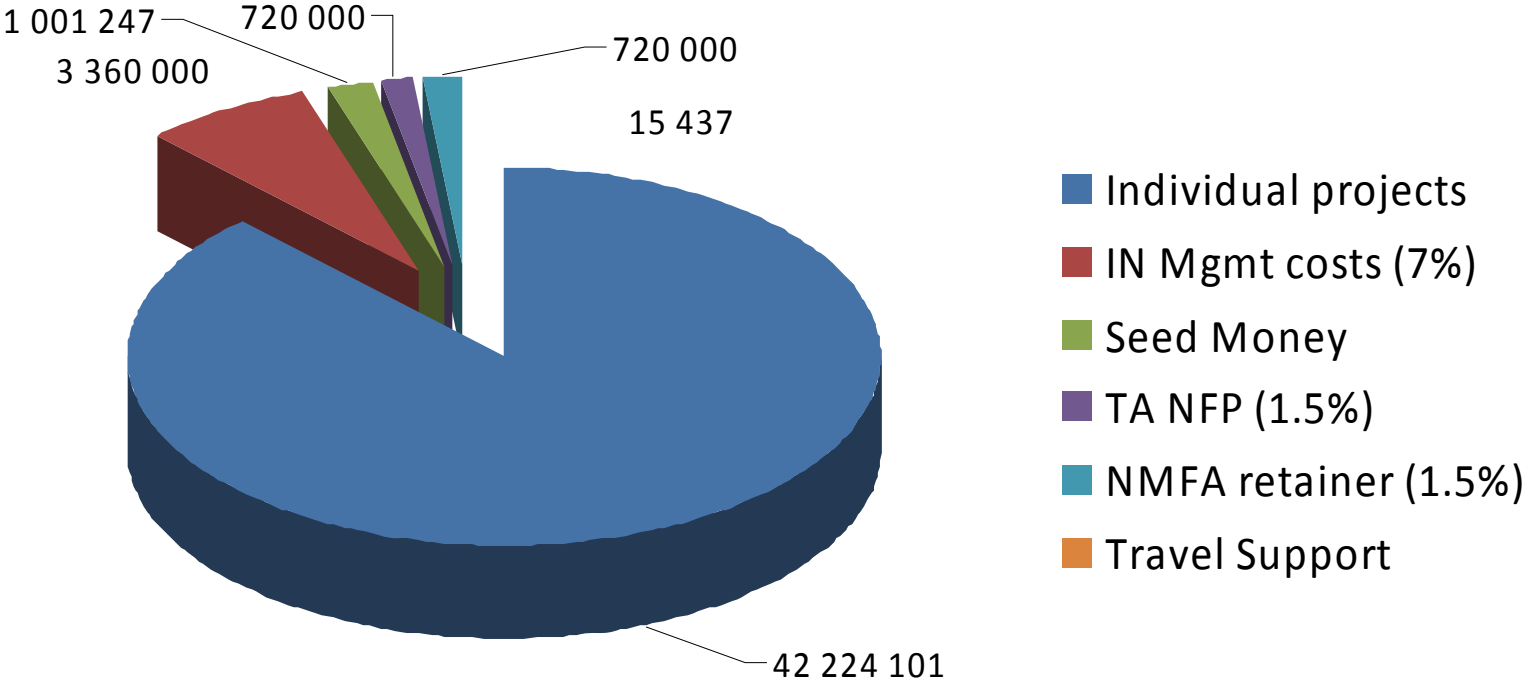
NORWEGIAN COOPERATION PROGRAMME WITH ROMANIA
as per May 2009



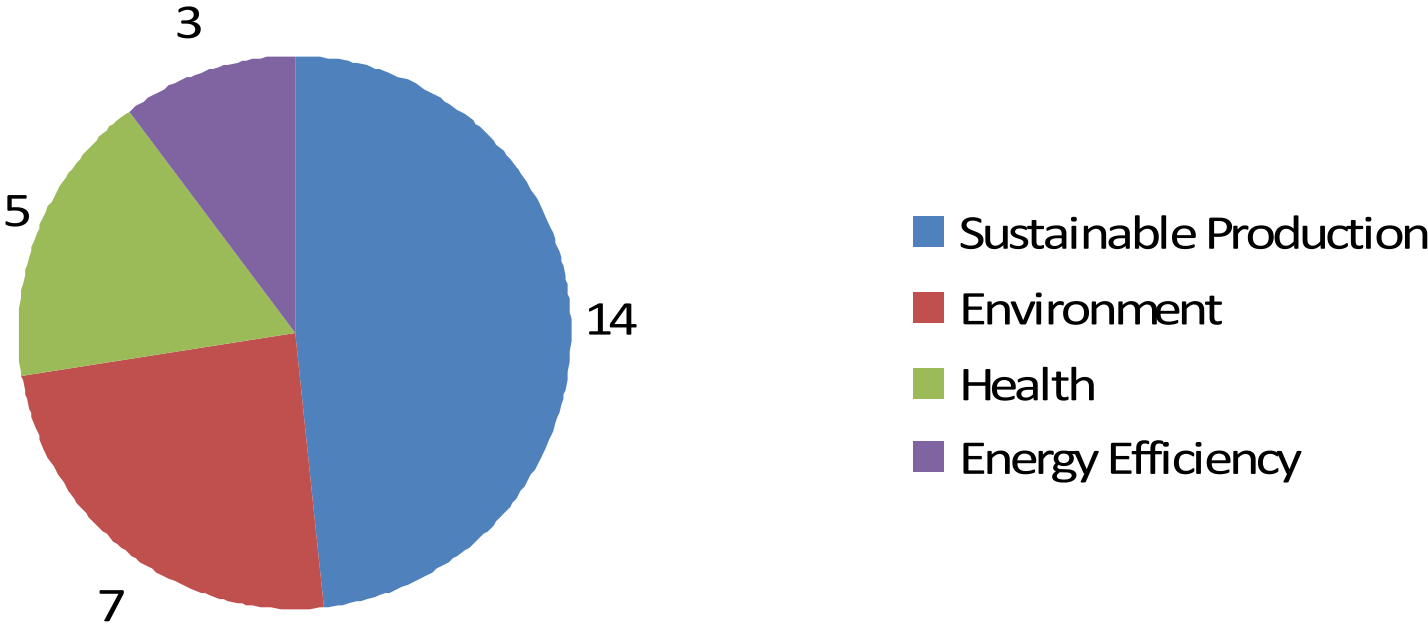
PROGRAMME OVERVIEW IN FIGURES (EUR)

TOTAL PROGRAMME ALLOCATION	48.000.000
MANAGEMENT COSTS IN (7%)	3.360.000
MANAGEMENT COSTS NMFA (1,5%)	720.000
TOTAL COSTS TECHNICAL ASSISTANCE NFP (1.5%)	720.000
TOTAL ALLOCATION FOR PROJECTS (after deduction of mgmt costs)	43.200.000
TOTAL IPs APPROVED	42.224.101
TOTAL SEED MONEY APPROVED (incl. PDP)	1.001.247
TOTAL TRAVEL SUPPORT APPROVED	15.437
TOTAL REJECTED	85.573.868
Rest (- EUR 40.785 from cancellations & effective payments)	0.00

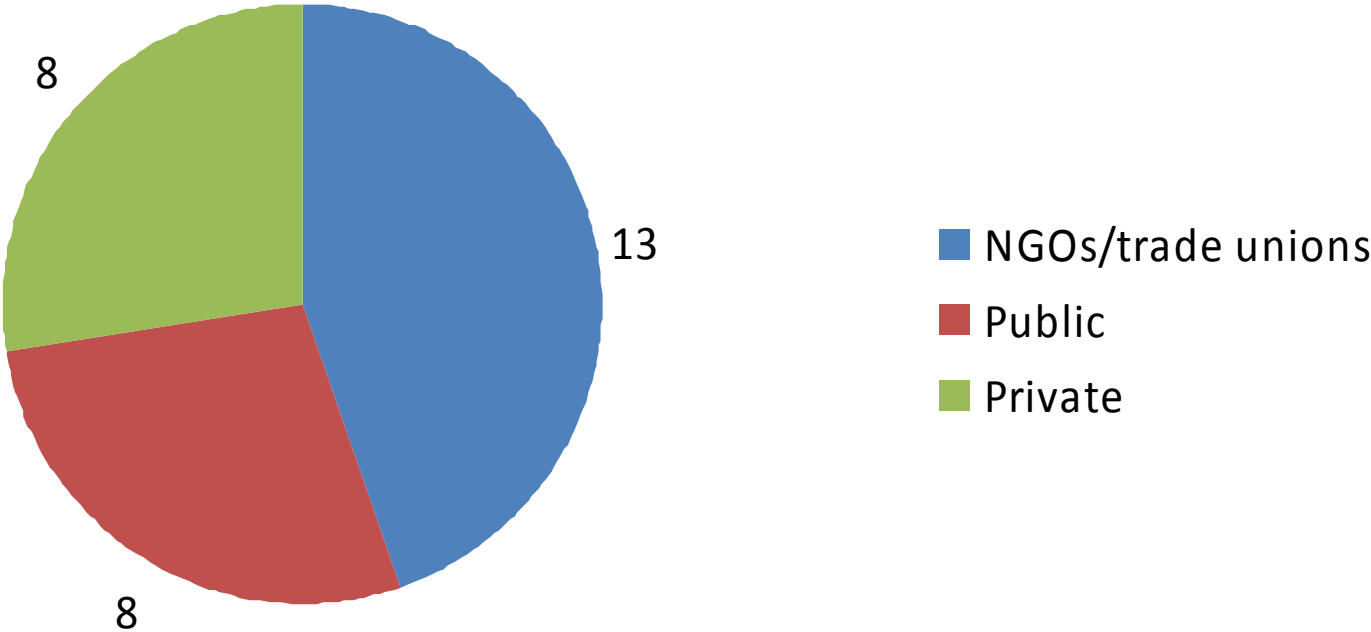
APPROVED PER PROJECT TYPE



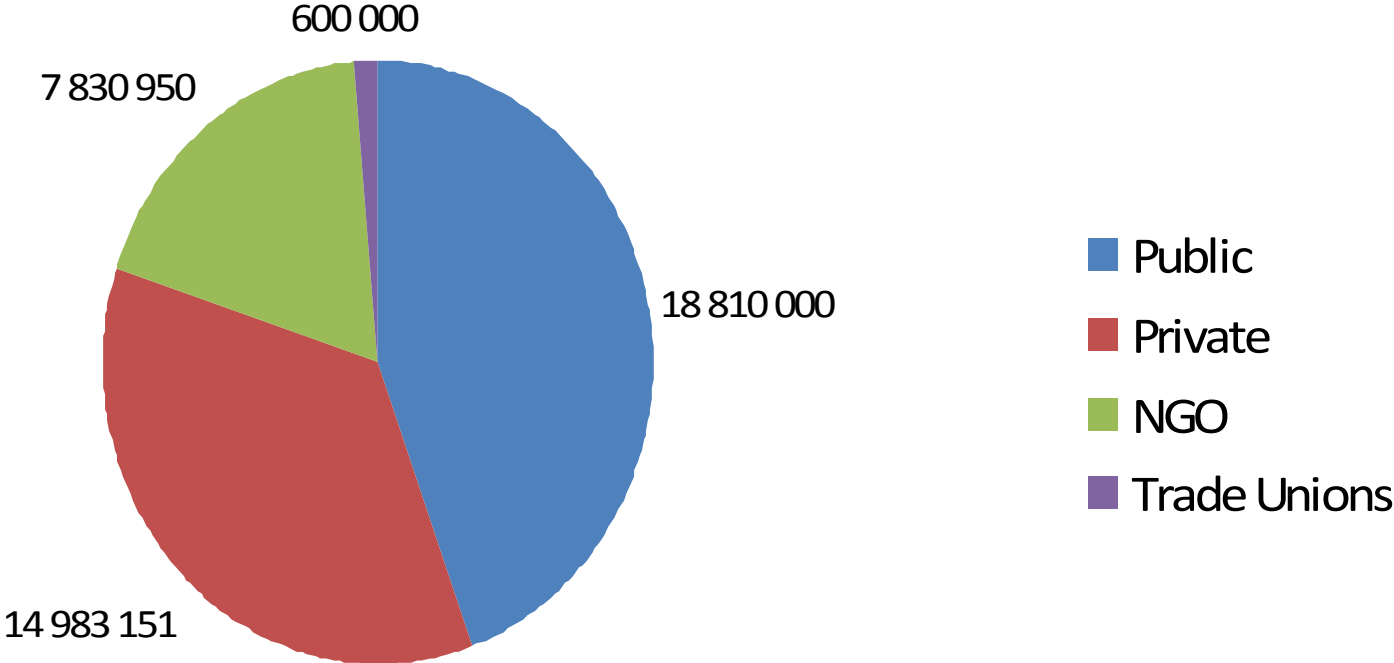
Number of IPs (29) Approved by Priority Area



Number of IPs Approved by Promoter



EUR amount of IPs Approved by Type of Promoter

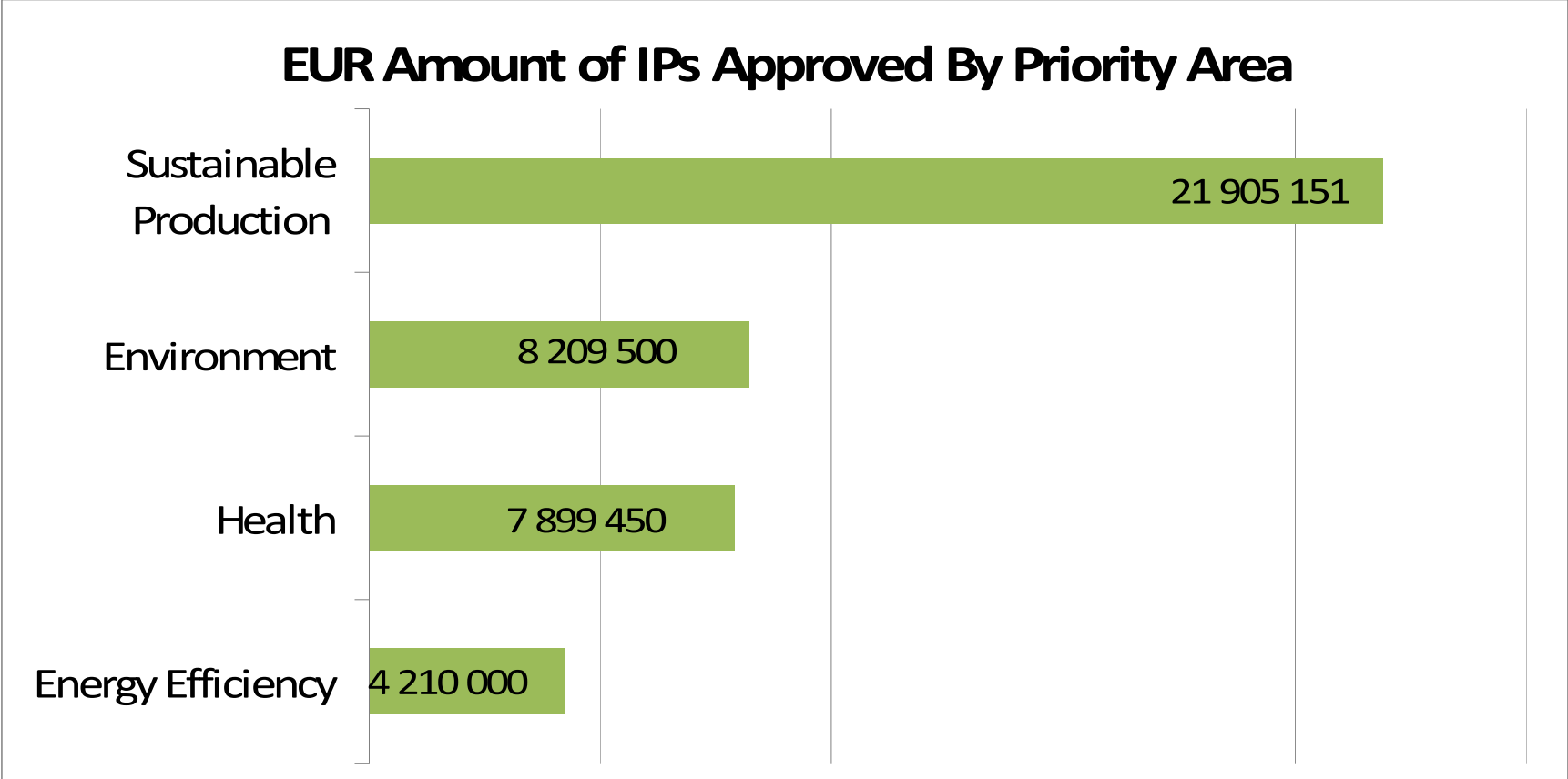




NORWEGIAN COOPERATION PROGRAMME WITH ROMANIA
as per May 2009



EUR Amount of IPs Approved By Priority Area

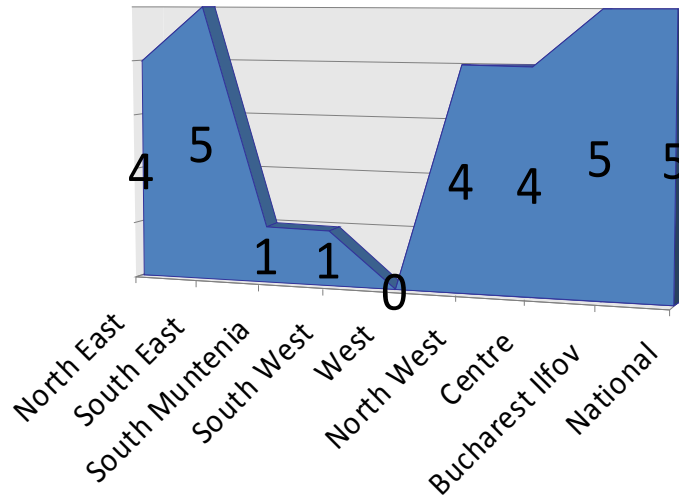




NORWEGIAN COOPERATION PROGRAMME WITH ROMANIA
as per May 2009



IPs approved by location in RO regions





NORWEGIAN COOPERATION PROGRAMME WITH ROMANIA
as per May 2009



IPs approved by promoters/region in NOR

